

HIGHLIGHTS OF PRESCRIBING INFORMATION

These highlights do not include all the information needed to use PHOTREXA® VISCOUS and PHOTREXA® safely and effectively. See full prescribing information for PHOTREXA VISCOUS and PHOTREXA.

PHOTREXA VISCOUS (riboflavin 5'-phosphate in 20% dextran ophthalmic solution) 0.146% for topical ophthalmic use
PHOTREXA (riboflavin 5'-phosphate ophthalmic solution) 0.146% for topical ophthalmic use
For use with the KXL™ System
Initial U.S. Approval: 2016

INDICATIONS AND USAGE

PHOTREXA VISCOUS and PHOTREXA are photoenhancers indicated for use with the KXL System in corneal collagen cross-linking for the treatment of progressive keratoconus (1)

DOSAGE AND ADMINISTRATION

- Debride the epithelium using standard aseptic technique using topical anesthesia (2)
- Then instill 1 drop of PHOTREXA VISCOUS topically on the eye every 2 minutes for 30 minutes (2)
- After 30 minutes, examine the eye under slit lamp for presence of a yellow flare in the anterior chamber. If flare is not detected, instill 1 drop of PHOTREXA VISCOUS every 2 minutes for an additional 2 to 3 drops and recheck for yellow flare. Repeat as necessary (2).
- Once flare is observed, perform ultrasound pachymetry. If corneal thickness is less than 400 microns, instill 2 drops of PHOTREXA every 5 to 10 seconds until the corneal thickness increases to at least 400 microns (2).
- Irradiation should not be performed unless this 400 micron threshold is met and the yellow flare is seen (2).

- Irradiate the eye for 30 minutes at 3mW/cm² using the KXL System as per the instructions in the KXL manual. During irradiation, continue topical instillation of PHOTREXA VISCOUS onto the eye every 2 minutes for the 30 minute irradiation period (2).
- Refer to the *KXL Operator's manual* for specific device instructions (2).

DOSAGE FORMS AND STRENGTHS

- PHOTREXA VISCOUS in a 3 mL glass syringe containing sterile 1.46 mg/mL riboflavin 5'-phosphate in 20% dextran ophthalmic solution (3.1)
- PHOTREXA in a 3 mL glass syringe containing sterile 1.46 mg/mL riboflavin 5'-phosphate ophthalmic solution (3.2)

CONTRAINDICATIONS

None (4)

WARNINGS AND PRECAUTIONS

Ulcerative keratitis can occur. Monitor for resolution of epithelial defects (5)

ADVERSE REACTIONS

The most common ocular adverse reactions in any CXL-treated eye were corneal opacity (haze), punctate keratitis, corneal striae, corneal epithelium defect, eye pain, reduced visual acuity, and blurred vision (6.1).

To report SUSPECTED ADVERSE REACTIONS, contact Avedro at 1-800-xxx-xxxx or FDA at 1-800-FDA-1088 or www.fda.gov/medwatch.

See 17 for PATIENT COUNSELING INFORMATION

Revised: 4/2016

FULL PRESCRIBING INFORMATION: CONTENTS*

1. INDICATIONS AND USAGE
2. DOSAGE AND ADMINISTRATION
3. DOSAGE FORMS AND STRENGTHS
 - 3.1 PHOTREXA VISCOUS
 - 3.2 PHOTREXA
4. CONTRAINDICATIONS
5. WARNINGS AND PRECAUTIONS
6. ADVERSE REACTIONS
 - 6.1 Clinical Trial Experience
8. USE IN SPECIFIC POPULATIONS

- 8.1. Pregnancy
- 8.2. Lactation
- 8.4. Pediatric Use
- 8.5. Geriatric Use
11. DESCRIPTION
12. CLINICAL PHARMACOLOGY
 - 12.1. Mechanism of Action
13. NONCLINICAL TOXICOLOGY
 - 13.1. Carcinogenesis, Mutagenesis, Impairment of Fertility
14. CLINICAL STUDIES
16. HOW SUPPLIED/STORAGE AND HANDLING
17. PATIENT COUNSELING INFORMATION

*Sections or subsections omitted from the full prescribing information are not listed.

FULL PRESCRIBING INFORMATION

1. INDICATIONS AND USAGE

PHOTREXA® VISCOUS and PHOTREXA® are indicated for use in corneal collagen cross-linking in combination with the KXL™ System for the treatment of progressive keratoconus.

2. DOSAGE AND ADMINISTRATION

Using topical anesthesia, debride the epithelium to a diameter of approximately 9 mm using standard aseptic technique. Post epithelial debridement, instill 1 drop of Photrexa Viscous topically on the eye every 2 minutes for 30 minutes.

At the end of the 30 minute soaking period, examine the eye under the slit lamp for the presence of a yellow flare in the anterior chamber. If the yellow flare is not detected, instill 1 drop of Photrexa Viscous every 2 minutes for an additional 2 to 3 drops and recheck for the presence of a yellow flare. This process can be repeated as necessary.

Once the yellow flare is observed, perform ultrasound pachymetry. If corneal thickness is less than 400 microns, instill 2 drops of PHOTREXA every 5 to 10 seconds until the corneal thickness increases to at least 400 microns. Irradiation should not be performed unless this 400 micron threshold is met and the yellow flare is seen.

Irradiate the eye for 30 continuous minutes at $3\text{mW}/\text{cm}^2$ at a wavelength of 365 nm, centered over the cornea, using the KXL System as per the instructions in the KXL manual. During irradiation, continue topical instillation of PHOTREXA VISCOUS onto the eye every 2 minutes for the 30 minute irradiation period.

For topical ophthalmic use. Do not inject.

Single use PHOTREXA VISCOUS and PHOTREXA only. Discard syringe(s) after use.

PHOTREXA VISCOUS and PHOTREXA are for use with the KXL System only.

PLEASE REFER TO THE KXL OPERATOR'S MANUAL FOR SPECIFIC DEVICE INSTRUCTIONS.

3. DOSAGE FORMS AND STRENGTHS

3.1 PHOTREXA VISCOUS

PHOTREXA VISCOUS in a 3 mL glass syringe containing sterile 1.46 mg/mL riboflavin 5'-phosphate in 20% dextran ophthalmic solution for topical administration.

3.2 PHOTREXA

PHOTREXA in a 3 mL glass syringe containing sterile 1.46 mg/mL riboflavin 5'-phosphate ophthalmic solution for topical administration.

4. CONTRAINDICATIONS

None.

5. WARNINGS AND PRECAUTIONS

Ulcerative keratitis can occur. Monitor for resolution of epithelial defects. [*See Adverse Reactions (6)*].

6. ADVERSE REACTIONS

The following clinically significant adverse reactions are described elsewhere in the labeling:

Ulcerative keratitis [*Warnings and Precautions (5)*]

6.1 Clinical Trials Experience:

Because clinical trials are conducted under widely varying conditions, adverse reaction rates observed in the clinical trials of a drug cannot be directly compared to rates in the clinical trials of another drug and may not reflect the rates observed in practice.

The safety of the corneal collagen cross-linking procedure was evaluated in 3 randomized, parallel-group, open-label, sham-controlled trials; patients were followed up for 12 months. In each study, only one eye of subjects was designated as the study eye. Study eyes were randomized to receive one of the two study treatments (CXL or sham) at the baseline visit and were followed up at Day 1, Week 1, and Months 1, 3, 6, and 12. At Month 3 or later, sham study eyes and non-study eyes had the option of receiving CXL treatment, and were followed-up for 12 months from the time of receiving CXL treatment. Each CXL treated eye received a single course of CXL treatment only.

Safety data were obtained from 193 randomized CXL study eyes, 191 control eyes, and 319 nonrandomized CXL non-study eyes. Overall, 512 eyes in 364 patients received CXL treatment.

In progressive keratoconus subjects, the most common ocular adverse reactions in any CXL-treated eye were corneal opacity (haze), punctate keratitis, corneal striae, corneal epithelium defect, eye pain, reduced visual acuity, and blurred vision ([Table 1](#)).

Adverse events reported in non-study, non-randomized CXL treated were similar in terms of preferred terms and frequency to those seen in randomized study eyes.

The majority of adverse events reported resolved during the first month, while events such as corneal epithelium defect, corneal striae, punctate keratitis, photophobia, dry eye and eye pain, and decreased visual acuity took up to 6 months to resolve and corneal opacity or haze took up to 12 months to resolve. In 1-2% of patients, corneal epithelium defect, corneal edema, corneal opacity and corneal scar continued to be observed at 12 months.

Table 1: Most Common ($\geq 1\%$) Ocular Adverse Reactions in CXL-Treated Study Eye in the Pooled Randomized Safety Population – N (%)

Preferred Term	Progressive Keratoconus Studies		Other Clinical Experience	
	CXL Group (N=102) ¹	Control Group (N=103) ¹	CXL Group (N=91) ¹	Control Group (N=88) ¹
Anterior chamber cell	2 (2)	0	2 (2)	1 (1)
Anterior chamber flare	4 (4)	0	5 (6)	2 (2)
Asthenopia	1 (1)	1 (1)	2 (2)	0
Blepharitis	0	0	0	1 (1)
Corneal disorder	3 (3)	1 (1)	3 (3)	0
Corneal epithelium defect	24 (24)	1 (1)	26 (28)	3 (3)
Corneal oedema	3 (3)	0	3 (3)	0
Corneal opacity ²	65 (64)	9 (9)	65 (71)	8 (9)
Corneal striae	24 (24)	12 (12)	8 (9)	6 (7)
Corneal thinning	1 (1)	2 (2)	0	0
Diplopia	2 (2)	1 (1)	1 (1)	0
Dry eye	6 (6)	2 (2)	13 (14)	4 (5)
Eye complication associated with device	2 (2)	0	1 (1)	0
Eye discharge	2 (2)	1 (1)	0	0
Eye oedema	7 (7)	0	0	0
Eye pain	17 (17)	3 (3)	24 (26)	0
Eye pruritus	2 (2)	0	0	0
Eyelid oedema	5 (5)	0	5 (6)	1 (1)
Foreign body sensation in eyes	15 (15)	1 (1)	13 (14)	2 (2)
Glare	4 (4)	1 (1)	2 (2)	0
Halo vision	1 (1)	0	2 (2)	0
Keratitis	1 (1)	0	3 (3)	0
Lacrimation increased	5 (5)	0	9 (10)	1 (1)
Meibomian gland dysfunction	1 (1)	1 (1)	3 (3)	2 (2)
Ocular discomfort	0	0	8 (9)	0
Ocular hyperaemia	14 (14)	2 (2)	7 (8)	4 (5)
Photophobia	11 (11)	0	17 (19)	0

Preferred Term	Progressive Keratoconus Studies		Other Clinical Experience	
	CXL Group (N=102) ¹	Control Group (N=103) ¹	CXL Group (N=91) ¹	Control Group (N=88) ¹
Punctate keratitis	25 (25)	8 (8)	18 (20)	3 (3)
Vision blurred	16 (16)	2 (2)	15 (17)	4 (5)
Visual acuity reduced	10 (10)	9 (9)	10 (11)	1 (1)
Visual impairment	3 (3)	2 (2)	4 (4)	1 (1)
Vitreous detachment	2 (2)	0	0	0

1) Results are presented as the number (%) of subjects with an event from baseline to Month 3.

2) Almost all cases of corneal opacity were reported as haze.

Headache was reported in between 4 to 8% of treated patients.

8. USE IN SPECIFIC POPULATIONS

8.1. Pregnancy

Risk Summary

Animal development and reproduction studies have not been conducted with the PHOTREXA® VISCOUS/PHOTREXA®/KXL™ system. Since it is not known whether the corneal collagen cross-linking procedure can cause fetal harm or affect reproduction capacity, it should not be performed on pregnant women.

8.2. Lactation

Risk Summary

There are no data on the presence of PHOTREXA VISCOUS or PHOTREXA in human milk, the effects on the breastfed infant, or the effects on milk production. The developmental and health benefits of breastfeeding should be considered, along with the mother's clinical need for the PHOTREXA/KXL corneal collagen cross-linking procedure and any potential adverse effects on the breastfed child from the PHOTREXA/KXL corneal collagen cross-linking procedure or from the underlying maternal condition.

8.4. Pediatric Use

The safety and effectiveness of corneal collagen cross-linking has not been established in pediatric patients below the age of 14.

8.5. Geriatric Use

No subjects enrolled in the clinical studies were 65 years of age or older.

11. DESCRIPTION

PHOTREXA VISCOUS (riboflavin 5'-phosphate in 20% dextran ophthalmic solution) 0.146% and PHOTREXA (riboflavin 5'-phosphate ophthalmic solution) 0.146% are intended for topical ophthalmic administration as part of corneal collagen cross-linking with the KXL System.

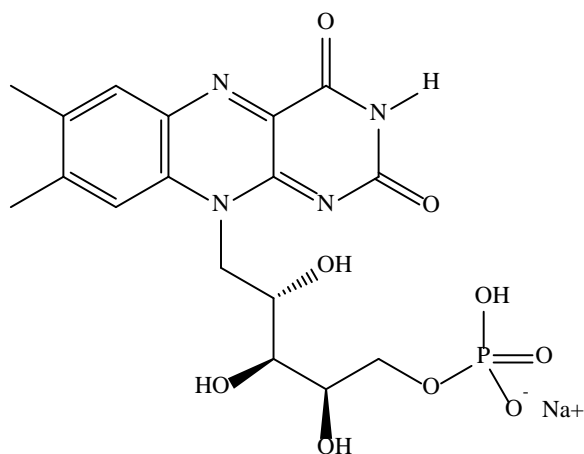
PHOTREXA VISCOUS and PHOTREXA are supplied as:

- PHOTREXA VISCOUS in a 3 mL glass syringe containing sterile 1.46 mg/mL riboflavin 5'-phosphate in 20% dextran ophthalmic solution for topical administration.
- PHOTREXA in a 3 mL glass syringe containing sterile 1.46 mg/mL riboflavin 5'-phosphate ophthalmic solution for topical administration.

PHOTREXA VISCOUS (riboflavin 5'-phosphate in 20% dextran ophthalmic solution) 0.146% is a yellow sterile buffered viscous solution containing 1.46 mg/mL riboflavin 5'-phosphate and 20% dextran 500. The pH of the solution is approximately 7.1 and the osmolality is 301-339 mOsm/kg. Each 1 mL of solution contains 1.53 mg of riboflavin 5'-phosphate sodium (equivalent to 1.20 mg riboflavin). Riboflavin 5'-phosphate sodium USP is a mixture of the sodium salts of riboflavin, riboflavin monophosphates, and riboflavin diphosphates. The inactive ingredients are dibasic sodium phosphate, dextran, monobasic sodium phosphate, sodium chloride, and water for injection.

PHOTREXA (riboflavin 5'-phosphate ophthalmic solution) 0.146% is a yellow sterile buffered solution containing 1.46 mg/mL riboflavin 5'-phosphate. The pH of the solution is approximately 7.1 and the osmolality is 157-177 mOsm/kg. Each 1 mL of solution contains 1.53 mg of riboflavin 5'-phosphate sodium (equivalent to 1.20 mg riboflavin). Riboflavin 5'-phosphate sodium USP is a mixture of the sodium salts of riboflavin, riboflavin monophosphates, and riboflavin diphosphates. The inactive ingredients are dibasic sodium phosphate, monobasic sodium phosphate, sodium chloride, and water for injection.

The chemical formula for riboflavin 5'-phosphate sodium (Vitamin B2) is $C_{17}H_{20}N_4NaO_9P$ with a molecular mass of 478.33 g/mol.



Please refer to the KXL System Operator's Manual for a specific device description and instructions.

12. CLINICAL PHARMACOLOGY

12.1. Mechanism of Action

Riboflavin 5'-phosphate sodium (Vitamin B2) is the precursor of two coenzymes, flavin adenine dinucleotide and flavin mononucleotide, which catalyze oxidation/reduction reactions involved in a number of metabolic pathways.

Under the conditions used for corneal collagen cross-linking, riboflavin 5'-phosphate functions as a photoenhancer and generates singlet oxygen which is responsible for the cross-linking.

13. NONCLINICAL TOXICOLOGY

13.1. Carcinogenesis, Mutagenesis, Impairment of Fertility

Animal studies have not been conducted to determine the carcinogenic potential of photoexcited riboflavin. Photoexcited riboflavin has been shown to be genotoxic in the Ames Salmonella reverse mutation assay and in the SOS/umu test system.

The genotoxicity of riboflavin, in the absence of photoexcitation has been examined in vitro in bacterial reverse mutation assays, sister chromatid exchange assay, chromosomal aberration assays and in vivo in a mouse micronucleus study. The overall weight of evidence indicates that riboflavin, in the absence of photoexcitation, is not genotoxic.

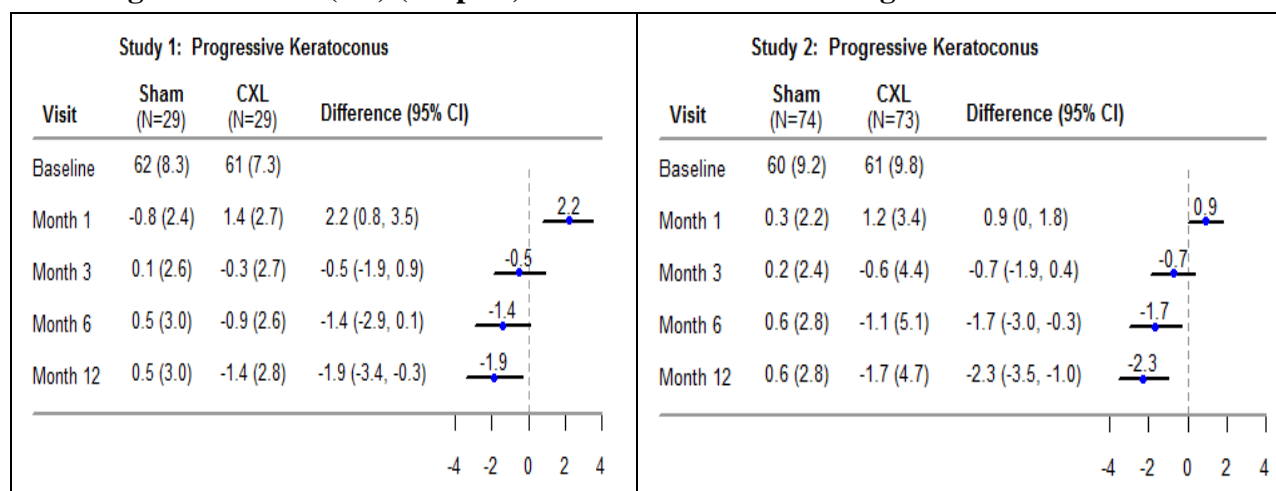
Animal studies to determine the effects of the PHOTREXA/KXL corneal collagen cross-linking procedure on fertility were not conducted.

14. CLINICAL STUDIES

Three prospective, randomized, parallel-group, open-label, sham-controlled trials were conducted to evaluate the safety and effectiveness of riboflavin ophthalmic solution/UVA irradiation for performing corneal collagen cross-linking. These trials were sham-controlled for the first 3 months and had a total duration of 12 months for safety and efficacy evaluations. Study 1 enrolled 58 patients with progressive keratoconus. Study 2 enrolled 147 patients with progressive keratoconus. In each study, patients had one eye designated as the study eye and were randomized to receive one of two study treatments (CXL or sham) in their study eye at the baseline visit. The patients were evaluated at Day 1, Week 1, and Months 1, 3, 6, and 12. At Month 3 or later, patients had the option of receiving CXL treatment in both the sham study eyes and non-study eyes and were followed-up for 12 months from the time of receiving CXL treatment. Approximately 56% and 89% of the sham study eyes in patients with progressive keratoconus received CXL treatment by Month 3 and Month 6, respectively. The average age of keratoconus patients was 33 years. The average baseline K_{max} value was 61 diopters.

In each study, the maximum corneal curvature (K_{\max}) was assessed at baseline, Months 1, 3, and 12. The CXL-treated eyes showed increasing improvement in K_{\max} from Month 3 through Month 12 (Figure 1). Progressive keratoconus patients had an average K_{\max} reduction of 1.4 diopter in Study 1 and 1.7 diopter in Study 2 at Month 12 in the CXL-treated eyes while the sham eyes had an average increase of 0.5 diopter in Study 1 and 0.6 diopter in Study 2 at Month 12; the difference (95% CI) between the CXL and sham groups in the mean change from baseline K_{\max} were -1.9 (-3.4, -0.3) diopters in Study 1 and -2.3 (-3.5, -1.0) diopters in Study 2.

Figure 1: Mean (SD) (Diopter) Baseline Kmax and Change from Baseline Kmax



Post-baseline missing data were imputed using last available K_{\max} value. For the sham study eyes that received CXL treatment after baseline, the last K_{\max} measurement recorded prior to receiving CXL treatment was used in the analysis for later time points.

16. HOW SUPPLIED/STORAGE AND HANDLING

PHOTREXA[®] VISCOUS and PHOTREXA[®] are provided in a bulk pack of 10 (ten), single-use foil pouches. Each foil pouch contains a 3 mL glass syringe of PHOTREXA VISCOUS or PHOTREXA contained within a Tyvek[®] pouch.

The entire bulk pack should be stored at 15°-25°C (59°-77°F) and care should be taken to minimize exposure of the syringe to light once removed from its protective packaging. Discard syringe after use.

For topical ophthalmic use.

PHOTREXA VISCOUS and PHOTREXA should be used with the KXL System only.

17. PATIENT COUNSELING INFORMATION

- Patients should be advised not to rub their eyes for the first five days after their procedure.

- Patients may be sensitive to light and have a foreign body sensation. Patients should be advised that there may be discomfort in the treated eye and that sunglasses may help with light sensitivity.
- If patients experience severe pain in the eye or any sudden decrease in their vision, they should be advised to contact their physician immediately.
- If the bandage contact lens that was placed on the patient's eye on the day of treatment falls out or becomes dislodged, the patient should be advised not to replace it and to contact their physician immediately.

PHOTREXA® VISCOUS (riboflavin 5'-phosphate in 20% dextran ophthalmic solution) 0.146%, PHOTREXA® (riboflavin 5'-phosphate ophthalmic solution) 0.146% and the KXL™ System are marketed by: Avedro, 230 Third Avenue, Waltham, MA, 02451.

Version:

April 2016